

# PREMIUM COLLECTION

A fine selection of high quality surfaces

Arpa 

# PREMIUM COLLECTION



# 01 COLOR SINTESI

## BL∞M Technology

Sustainability is not something you dream about, but something you do. It's about acting.

True to this vision, Arpa Industriale has developed BL∞M, a new core technology for its high quality surface materials. Their core is made of paper and thermosetting resins based on phenol.

With BL∞M, lignin technology has been introduced to significantly reduce the amount of phenol included in the resin by 50%. Lignin is a natural polymer defined as the glue that holds wood fibres together. With this innovation most of the key ingredients originate from the same place: responsibly managed forests.

BL∞M technology is now available for an exclusive selection of 36 solid colours in two finishes: Kér and Lucida.

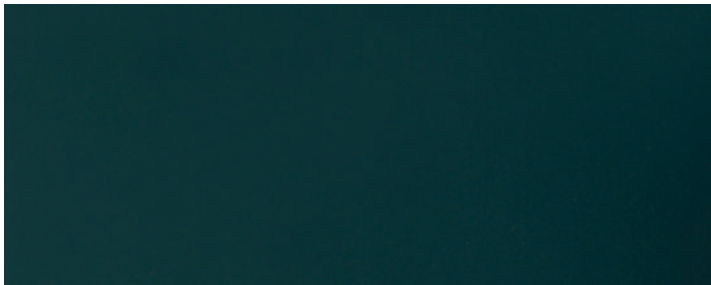
**Colorsintesi**  
Plain Colours  
BL∞M Technology  
→ NEW



0776  
Verde Celadon  
Kèr, Lucida



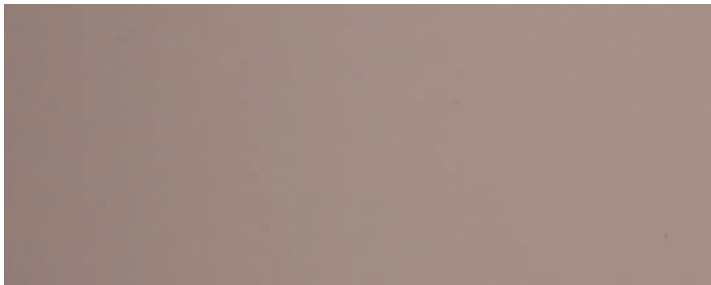
0777  
Verde Marino  
Kèr, Lucida



0781  
Verde Pino  
Kèr, Lucida



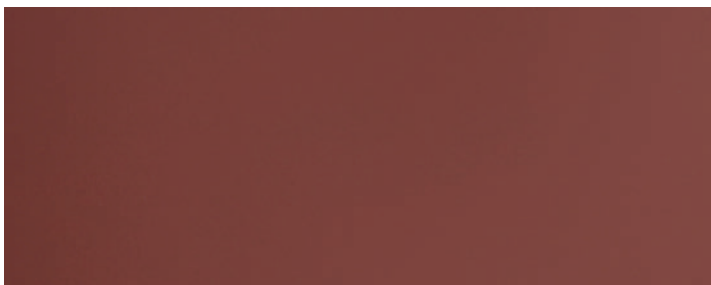
0780  
Blu Berta  
Kèr, Lucida



0275  
Rosa Bourbon  
Kèr, Lucida



0778  
Maggese  
Kèr, Lucida



0779  
Rosa Shade  
Kèr, Lucida



0775  
Rosso Falun  
Kèr, Lucida

**Colorsintesi**  
Plain Colours  
BL∞M Technology  
→ NEW



0001  
Bianco  
Kèr, Lucida



0028  
Bianco Nube  
Kèr, Lucida



0010  
Bianco Azzurro  
Kèr, Lucida



0249  
Bianco Decò  
Kèr, Lucida



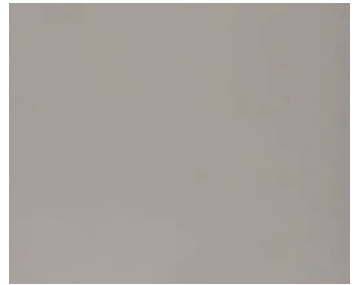
0739  
Grigio Tela  
Kèr, Lucida



0244  
Porcellana  
Kèr, Lucida



0266  
Avorio Cisa  
Kèr, Lucida



0622  
Grigio Viola  
Kèr, Lucida



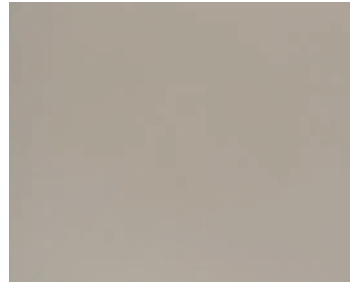
0527  
Grigio Argento  
Kèr, Lucida



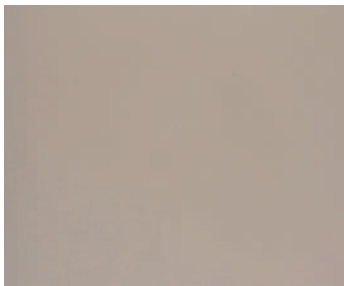
0211  
Grigio Perla  
Kèr, Lucida



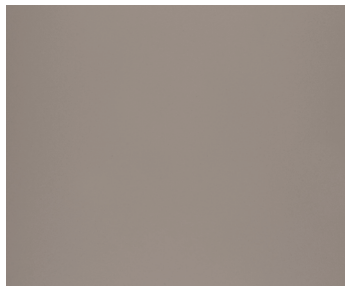
0210  
Grigio Medio  
Kèr, Lucida



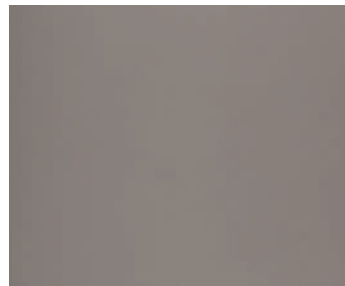
0201  
Sabbia  
Kèr, Lucida



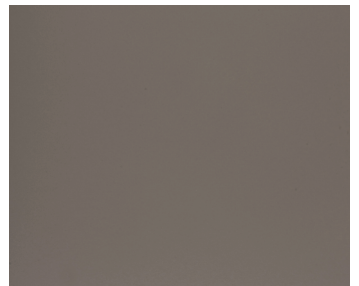
0737  
Beige Atlantide  
Kèr, Lucida



0247  
Grigio Siliceo  
Kèr, Lucida



0616  
Grigio Alpaca  
Kèr, Lucida



0735  
Castoro Fiber  
Kèr, Lucida

**Colorsintesi**  
Plain Colours  
BL∞M Technology



0736  
Grigio British  
Kèr, Lucida



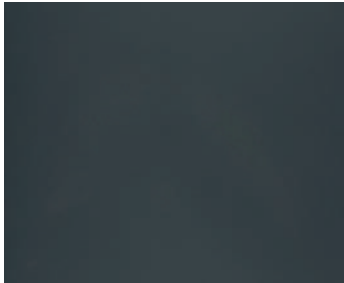
0761  
Grigio Rimant  
Kèr, Lucida



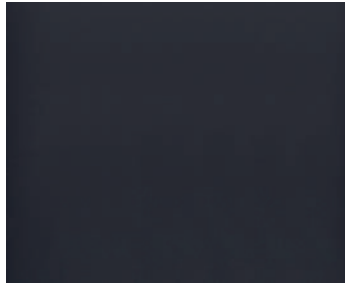
0738  
Grigio Traffico  
Kèr, Lucida



0623  
Grigio Ferro  
Kèr, Lucida



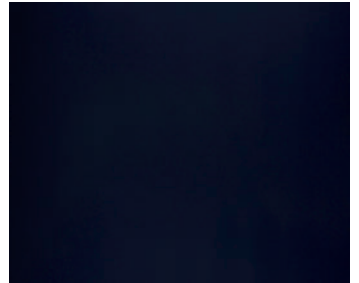
0760  
Verde Modo  
Kèr, Lucida



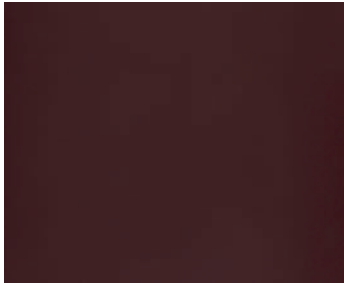
0700  
Grigio Vernice  
Kèr, Lucida



0526  
Grigio Antracite  
Kèr, Lucida



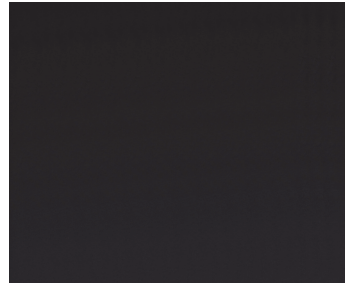
0507  
Blu Notte  
Kèr, Lucida



0759  
Rosso Purjai  
Kèr, Lucida



0553  
Cioccolato  
Kèr, Lucida



0758  
Cacao Nocorin  
Kèr, Lucida



0509  
Nero  
Kèr, Lucida

# Woodgrains

02

**LEGNI**

# Legni

## Woodgrains



4625  
Noce Sinfonia  
Alevé

NEW



4626  
Noce Evolo  
Alevé

NEW



4627  
Rovere Valdweg  
Alevé

NEW



4628  
Pook  
Alevé

NEW



4511  
Rovere Fumo  
Alevé



4512  
Rovere Barrique  
Alevé



4516  
Rovere Asburgo Scuro  
Larix



4517  
Rovere Carbone  
Alevé



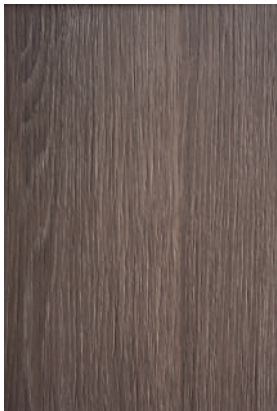
4573  
Rovere Maul  
Alevé



4519  
Rovere Asburgo  
Larix



4520  
Rovere Asburgo Naturale  
Alevé



4526  
Rovere Visone  
Alevé



4543  
Rovere Mamphis  
Alevé



4574  
Rovere Iceland  
Alevé



4584  
Rovere Wafer  
Alevé



# Legni

## Woodgrains



4585  
Rovere Rock  
Alevé



4586  
Rovere Texas  
Alevé



4587  
Rovere Slavonia  
Alevé



4548  
Olmo Scuro  
Alevé



4575  
Rovere Valley  
Larix



4514  
Rovere Smirne  
Larix



4557  
Rovere Maso  
Larix



4604  
Noce Savoia  
Alevé



4617  
Noce Carya Light  
Alevé



4588  
Rovere Versailles  
Alevé



4539  
Olmo Mercurio  
Alevé



4529  
Olmo Naturale  
Alevé



4513  
Pino Grey Chic  
Ghibli



4515  
Pino White Chic  
Ghibli



4528  
Olmo Grigio

# Legni

## Woodgrains



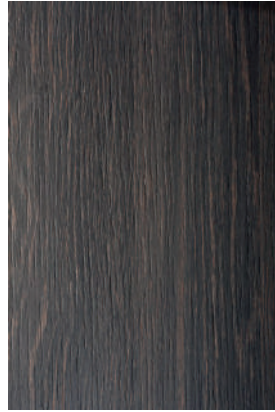
4538  
Olmo Bianco  
Alevé



4518  
Nocino  
Alevé



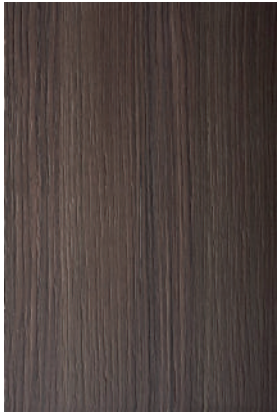
4571  
Wengè Lux



4536  
Wengè Gold



4616  
Noce Carya Dark  
Alevé



4527  
Noce Cendré



4445  
Lamphun Teak  
Ghibli



4545  
Shiro  
Alevé



4603  
Eucalipto Birmania



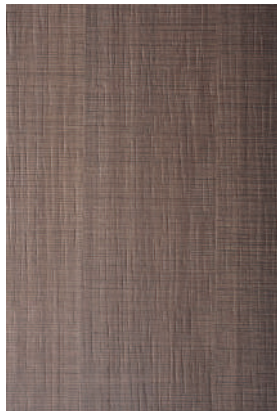
4605  
Ciliegio Avola Chiaro  
Alevé



4606  
Ciliegio Avola Scuro  
Alevé



4537  
Canaletto Naturale  
Alevé



4533  
Segato Tinto  
Alevé



4532  
Segato Naturale  
Alevé



4612  
Black Truss  
Alevé

# Legni

## Woodgrains



4611  
Bramble  
Alevé



4492  
Tavolato Ruggine  
Flatting



4491  
Tavolato Bianco  
Flatting



4490  
Tavolato Nero  
Flatting



4602  
Eucalipto California  
Alevé



4572  
Larix Amur  
Larix



4534  
Fusain Chiaro  
Naked



4531  
Fusain Noce  
Naked



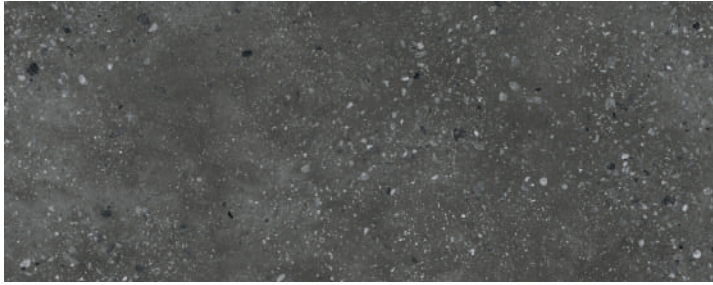
4535  
Fusain  
Naked

# Stones

03

PIETRE

# Pietre Stones



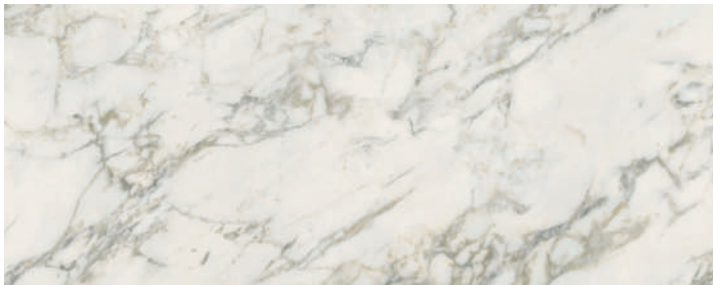
3457  
Rox Black  
Kèr

NEW



3467  
Aurina  
Mika

NEW



3469  
Marmo Carnico  
Kèr

NEW



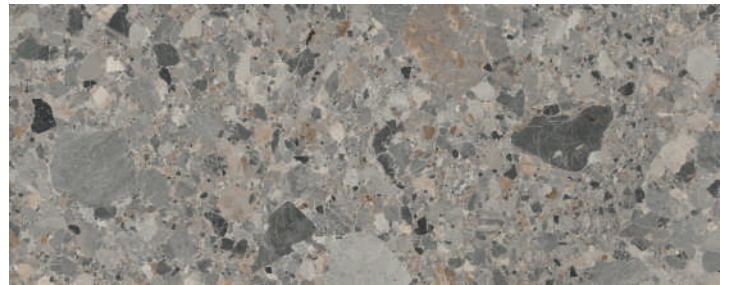
3470  
Appia Bianco  
Mika

NEW



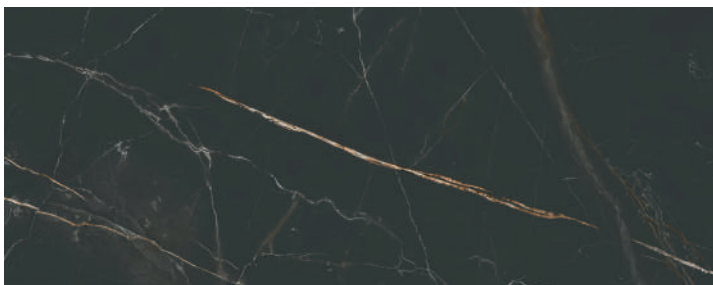
3471  
Appia Beige  
Mika

NEW



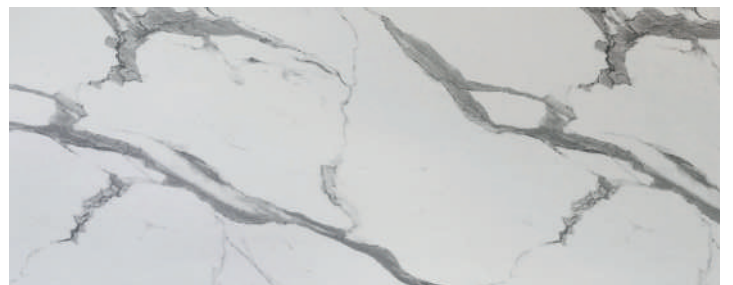
3475  
Cepp  
Luna

NEW



3476  
Marmo Elite  
Kèr

NEW



3493  
Marmo Olimpo  
Kèr

NEW

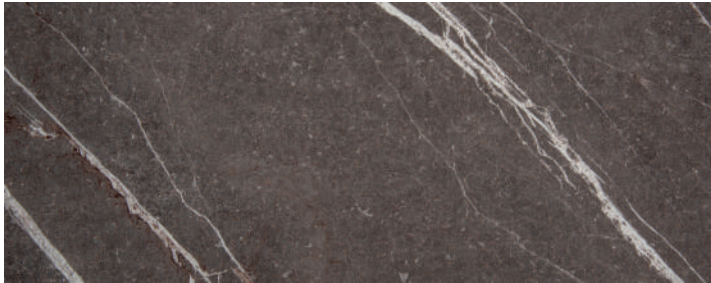


3503  
Marmo Venato  
Kér

NEW



3446  
Dark Pulpis  
Kér



3445  
Grey Pulpis  
Kér



3447  
Light Pulpis  
Kér



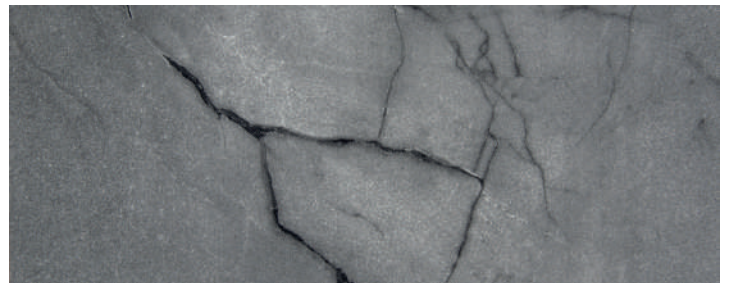
3452  
Black Kandia  
Kér



3451  
White Kandia  
Kér

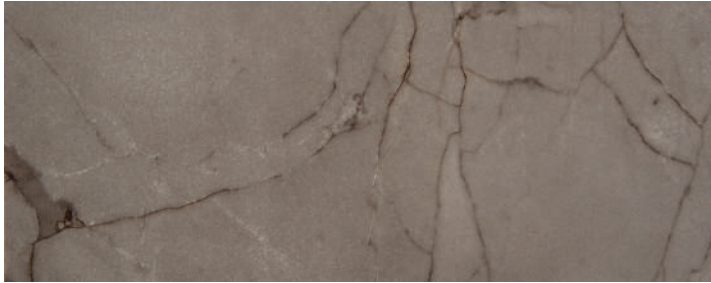


3449  
Yule White  
Kér



3448  
Yule Grey  
Kér

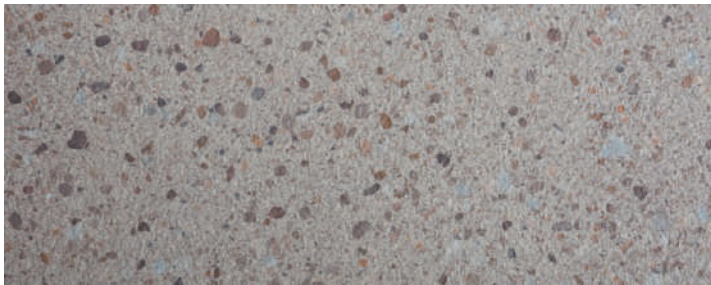
# Pietre Stones



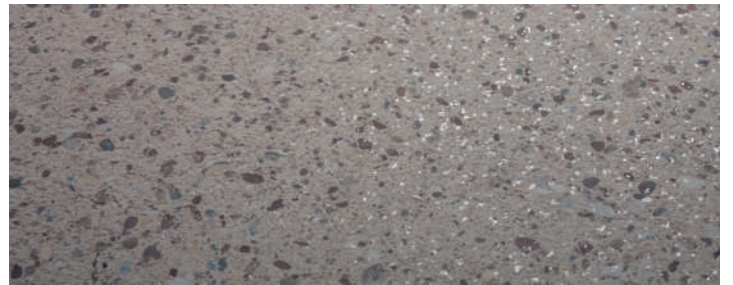
3450  
Yule Brown  
Kér



3379  
Atena Grigio  
Mika



3378  
Atena Beige  
Mika



3380  
Atena Rosa  
Mika



3382  
Dades  
Luna



3383  
Manaus Brown  
Luna

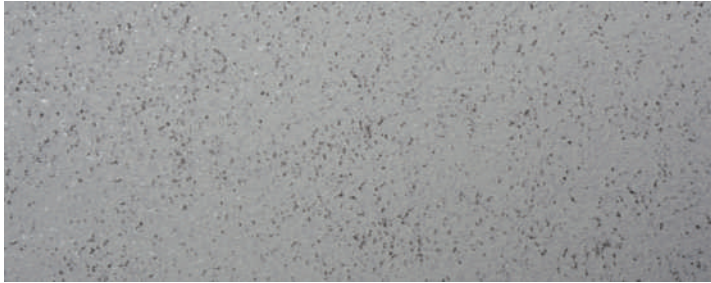


3381  
Manaus Gray  
Luna

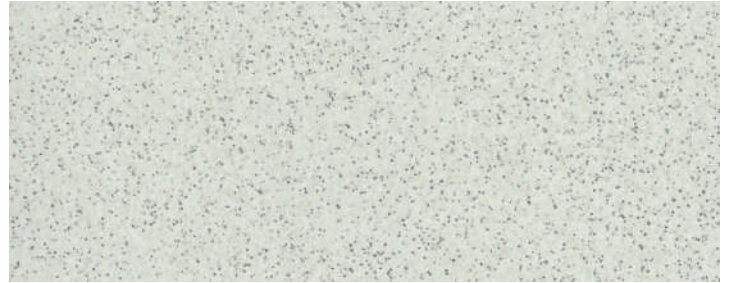


3349  
Stromboli  
Luna

# Pietre Stones



3362  
Ortles Bianco  
Mika



3194  
Corlam Bianco  
Mika



3195  
Corlam Beige  
Mika



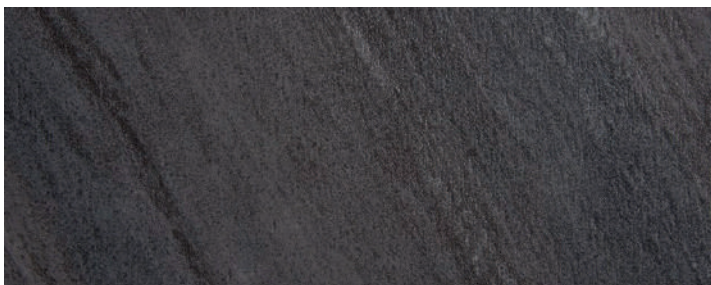
3237  
Soft Stone Bianco  
Mika



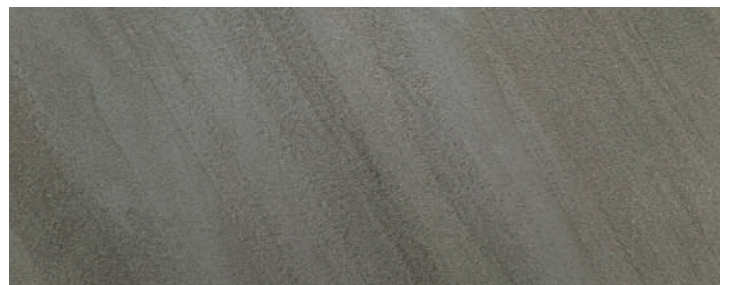
3354  
Caribe Bianco  
Mika



3363  
Caribe Grigio  
Mika



3409  
Munè Brown  
Losa



3410  
Munè Grey  
Losa



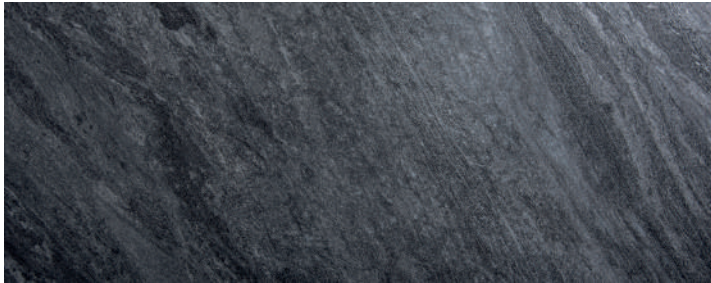
# Pietre Stones



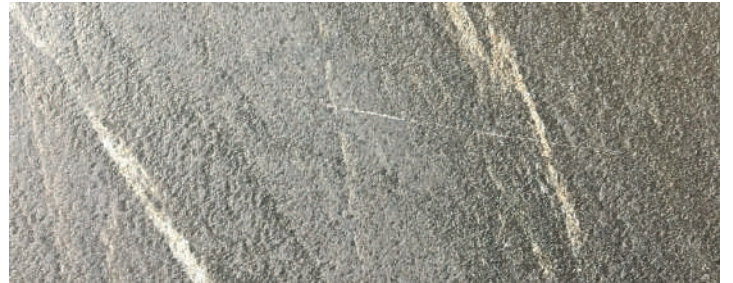
3408  
Munè Black  
Losa



3431  
Grey Cardoso  
Losa



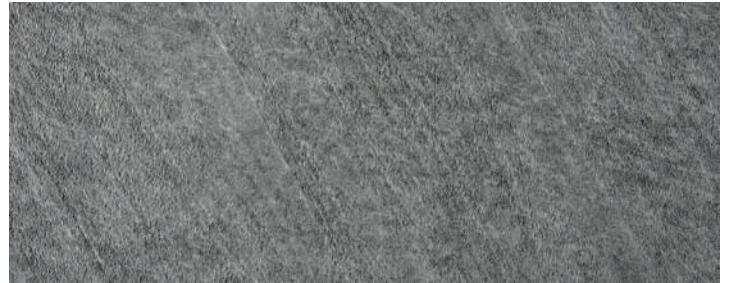
3432  
Black Cardoso  
Losa



3420  
Calypso  
Losa



3440  
Paraiba Brown  
Losa



3441  
Paraiba White  
Losa

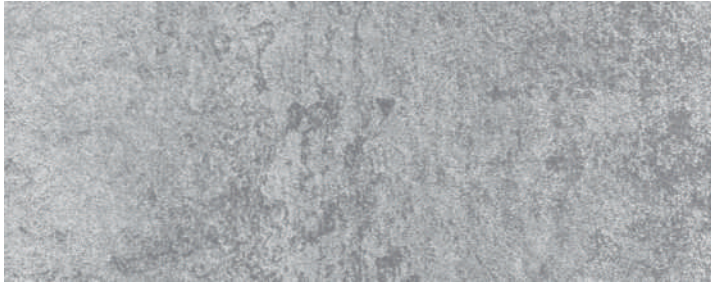


3442  
Paraiba Grey  
Losa



3330  
Corten Sabbia  
Luna

# Pietre Stones



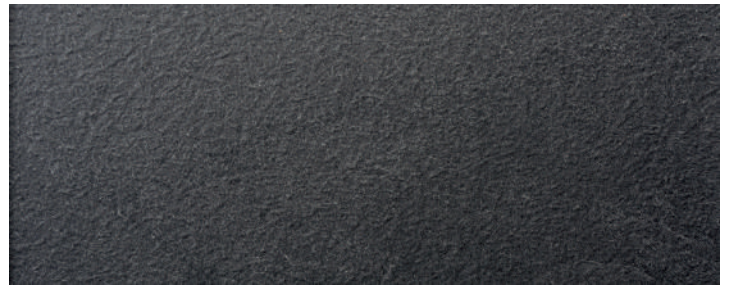
3331  
Corten Grigio  
Luna



3428  
Oxun  
Luna



3355  
Luserna Bianco  
Urban



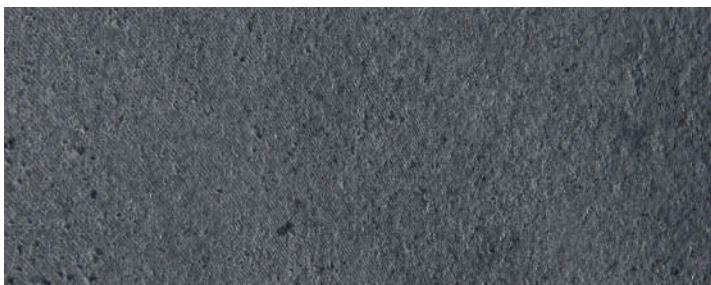
3366  
Luserna Nero  
Urban



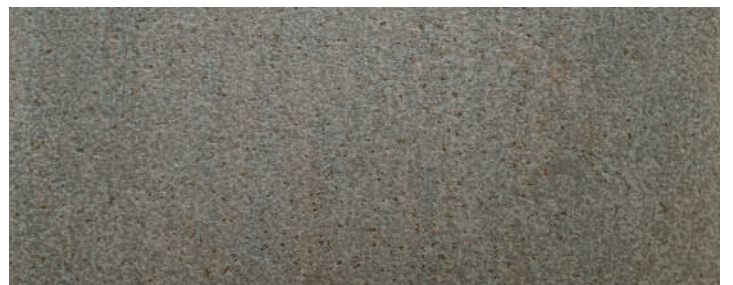
3364  
Luserna Grigio  
Urban



3255  
Ardesia  
Urban

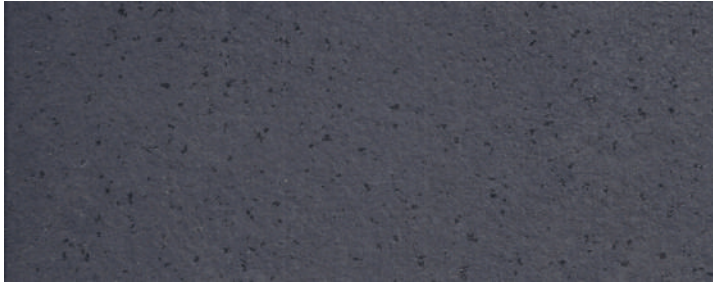


3416  
Drop  
Mika

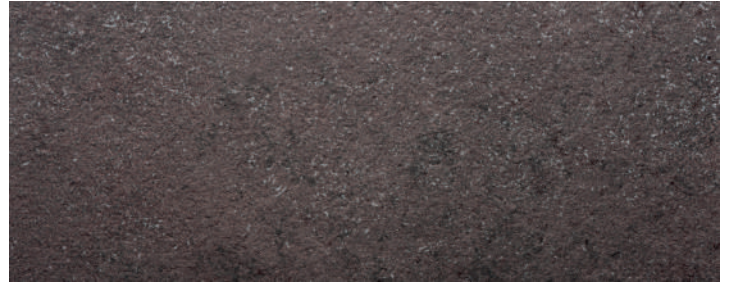


3430  
Dark Tribeca  
Mika

# Pietre Stones



3329  
Porfido Nero  
Mika



3358  
Porfido Principe  
Mika



3325  
Porfido Marrone  
Mika



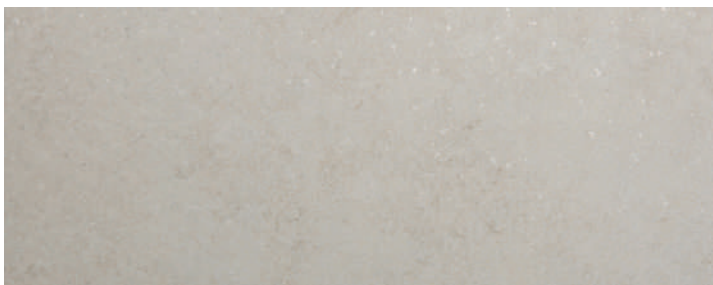
3326  
Porfido Grigio  
Mika



3324  
Porfido Naturale  
Mika



3327  
Porfido Chiaro  
Mika



3328  
Porfido Gesso  
Mika



3342  
Basalto Cenere  
Mika

# Pietre Stones



3341  
Basalto Marrone  
Mika



3340  
Basalto Vulcano  
Mika



3192  
Copperfield Grigio  
Luna



3375  
Travertino Romano  
Luna



3433  
Marquinia  
Luna



3369  
Cassaforma  
Luna



3415  
Cuma Dark  
Luna



3414  
Cuma Light  
Luna

# Pietre Stones



3359  
Portland Grigio  
Luna



3347  
Portland Bianco  
Luna



3453  
Marmo Afyon  
Kèr



3346  
Marmo Canova  
Kèr



3281  
Gioia Bianco  
Kèr

# Patterns

04

FANTASIE

# Fantasie Patterns



3468  
Samui  
Mika

NEW



3472  
Peltro  
Kèr

NEW



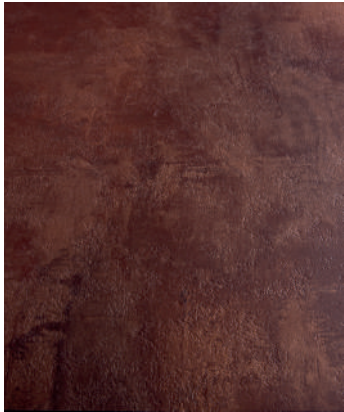
3473  
Rapsodia  
Mika

NEW



3474  
Riff  
Mika

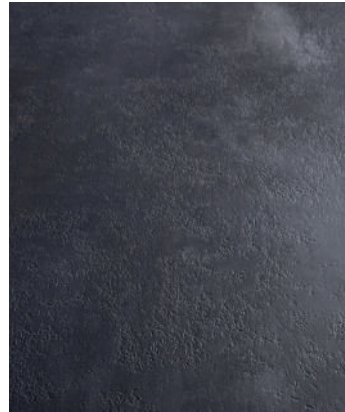
NEW



3411  
Voyage Copper  
Urban



3412  
Voyage Bronze  
Urban



3413  
Voyage Silver  
Urban



3279  
Volcanic Ash  
Urban



3396  
Cimant Sand  
Urban



3397  
Cimant Grey  
Urban



3395  
Cimant White  
Urban



3398  
Cimant Ash  
Urban

# Fantasie Patterns



3418  
Cryptic Brown  
Urban



3419  
Cryptic Grey  
Urban



3417  
Cryptic White  
Urban



2619  
Sixty Crema  
Urban



2618  
Sixty Verde  
Tex



3317  
Sixty Nero  
Tex



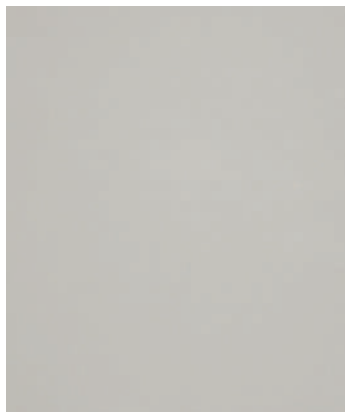
2620  
Sixty Bianco  
Tex



3318  
Sixty Grigio  
Tex



2536  
Rosa Versailles  
Lucida



2516  
Madreperla  
Lucida



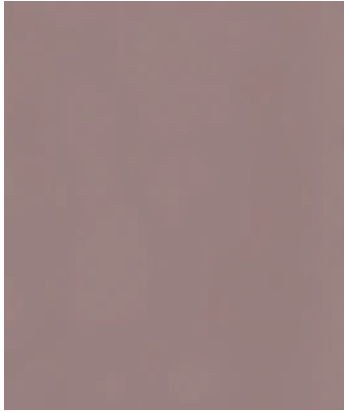
2608  
Argento  
Lucida



3175  
Gold  
Lucida



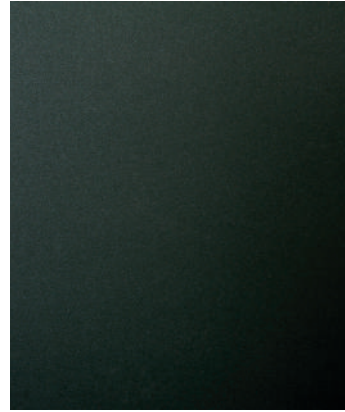
# Fantasie Patterns



2513  
Pleiadi  
Lucida



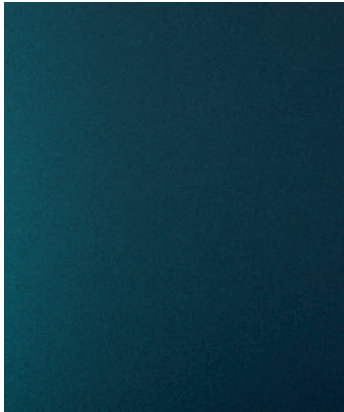
2633  
Brown Shot  
Lucida



2624  
Adil  
Lucida



2631  
Green Shot  
Lucida



2632  
Blue Shot  
Lucida



2625  
Vega  
Lucida



2623  
Nial  
Lucida



2617  
Micro Nero  
Lucida



2621  
Micro Pruno  
Lucida



2551  
Visone  
Lucida



3443  
Swing Grey  
Kèr



3444  
Swing Cream  
Kèr

# Fantasie Patterns



3112  
Ecodecor Magnolia  
Mika



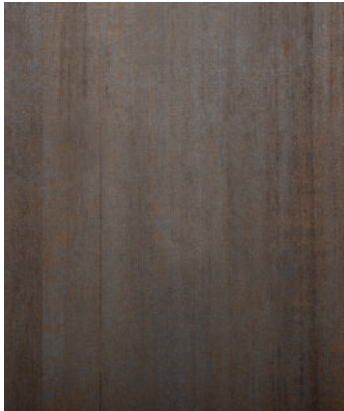
3427  
Silver Seventy  
Flatting



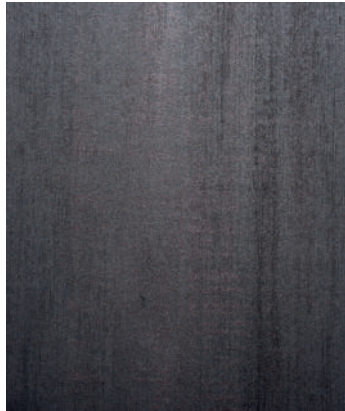
3426  
Gold Seventy  
Flatting



3392  
Hipster Bronze  
Flatting



3393  
Hipster Copper  
Flatting



3394  
Hipster Carbon  
Flatting

# PREMIUM COLLECTION



**Colorsintesi**  
Plain Colours  
BL∞OM Technology

Code	Decor Name	Typologies	
0001	Bianco	All range is available in Standard (STD BL∞OM)	
0010	Bianco Azzurro		
0028	Bianco Nube		
0201	Sabbia		
0210	Grigio Medio		
0211	Grigio Perla		
0244	Porcellana		
0247	Grigio Siliceo		
0249	Bianco Decò		
0266	Avorio Cisa		
0507	Blu Notte		Thickness (mm)
0509	Nero		
0526	Grigio Antracite		
0527	Grigio Argento		
0553	Cioccolato		
0616	Grigio Alpaca		
0622	Grigio Viola		
0623	Grigio Ferro		
0700	Grigio Vernice		
0735	Castoro Fiber		
0736	Grigio British		
0737	Beige Atlantide	All range is available in 0,7	
0738	Grigio Traffico		
0739	Grigio Tela		Finishes
0758	Cacao Nocorin		
0759	Rosso Purjai		
0760	Verde Modo		
0761	Grigio Rimant		
0275	Rosa Bourbon		
0775	Rosso Falun		
0776	Verde Celadon		
0777	Verde Marino		
0778	Maggese		
0779	Rosa Shade		
0780	Blu Berta	All range is available in Kèr, Lucida	
0781	Verde Pino		

## NOTE

Each matching has been evaluated visually; the above references are the best match available, not perfect colour equivalences.

# Legni

## Woodgrains

Code	Decor Name	Sizes (mm) & Finishes											
		3050x1300				4200x1300				4200x1600			
		Alevé	Larix	Naked	Flattig	Alevé	Larix	Naked	Flattig	Alevé	Larix	Naked	Flattig
4625	Noce Sinfonia	NEW	•				•				•		
4626	Noce Evolo	NEW	•				•				•		
4627	Rovere Valdweg	NEW	•				•				•		
4628	Pook	NEW	•				•				•		
4517	Rovere Carbone		•				•				•		
4512	Rovere Barrique		•				•				•		
4605	Ciliegio Avola Chiaro		•				•				•		
4606	Ciliegio Avola Scuro		•				•				•		
4572	Larix Amur		•				•				•		
4513	Pino Grey Chic		•				•				•		
4515	Pino White Chic		•				•				•		
4536	Wengè Gold		•				•				•		
4571	Wengè Lux		•				•				•		
4548	Olmo Scuro		•				•				•		
4528	Olmo Grigio		•				•				•		
4538	Olmo Bianco		•				•				•		
4539	Olmo Mercurio		•				•				•		
4529	Olmo Naturale		•				•				•		
4612	Black Truss		•				•				•		
4611	Bramble		•				•				•		
4545	Shiro		•				•				•		
4603	Eucalipto Birmania		•				•				•		
4602	Eucalipto California		•				•				•		
4445	Lamphun Teak		•				•				•		
4574	Rovere Iceland		•				•				•		
4573	Rovere Maul		•				•				•		

## Typologies

All range is available in Standard (STD), Postforming (PF)

## Thickness (mm)

All range is available in  
0,7mm - 0,9mm (STD)  
0,6mm (PF)

# Legni

## Woodgrains

Code	Decor Name	Sizes (mm) & Finishes											
		3050x1300				4200x1300				4200x1600			
		Alevé	Larix	Naked	Flatting	Alevé	Larix	Naked	Flatting	Alevé	Larix	Naked	Flatting
4585	Rovere Rock	•				•				•			
4586	Rovere Texas	•				•				•			
4519	Rovere Asburgo	•				•				•			
4520	Rovere Asburgo Naturale	•				•				•			
4516	Rovere Asburgo Scuro	•				•				•			
4588	Rovere Versailles	•				•				•			
4511	Rovere Fumo	•				•				•			
4526	Rovere Visone	•				•				•			
4543	Rovere Mamphis	•				•				•			
4584	Rovere Wafer	•				•				•			
4533	Segato Tinto	•				•				•			
4532	Segato Naturale	•				•				•			
4518	Nocino	•				•				•			
4604	Noce Savoia	•				•				•			
4616	Noce Carya Dark	•				•				•			
4617	Noce Carya Light	•				•				•			
4587	Rovere Slavonia	•				•				•			
4527	Noce Cendré	•				•				•			
4537	Canaletto Naturale	•				•				•			
4575	Rovere Valley		•				•				•		
4514	Rovere Smirne		•				•				•		
4557	Rovere Maso		•				•				•		
4535	Fusain			•									
4534	Fusain Chiaro			•									
4531	Fusain Noce			•									
4492	Tavolato Ruggine							•					•
4491	Tavolato Bianco							•					•
4490	Tavolato Nero							•					•

## Typologies

All range is available in Standard (STD), Postforming (PF)

## Thickness (mm)

All range is available in  
0,7mm - 0,9mm (STD)  
0,6mm (PF)

# Pietre

## Stones

Code	Decor Name		Sizes (mm) & Finishes																	
			3050x1300				4200x1300					4200x1600								
			Kér	Mika	Luna	Urban	Kér	Mika	Luna	Urban	Losa	Kér	Mika	Luna	Urban	Losa				
3457	Rox Black	NEW	•					•							•					
3467	Aurina	NEW		•					•							•				
3469	Marmo Carnico	NEW	•					•							•					
3470	Appia Bianco	NEW		•					•							•				
3471	Appia Beige	NEW		•					•							•				
3475	Cepp	NEW			•					•							•			
3476	Marmo Elite	NEW	•					•							•					
3493	Marmo Olimpo	NEW	•					•							•					
3503	Marmo Venato	NEW	•					•							•					
3446	Pulpis Dark		•					•							•					
3445	Pulpis Grey		•					•							•					
3447	Pulpis Light		•					•							•					
3452	Kandia Black		•					•							•					
3451	Kandia White		•					•							•					
3449	Yule White		•					•							•					
3448	Yule Grey		•					•							•					
3450	Yule Brown		•					•							•					
3379	Atena Grigio			•					•							•				
3378	Atena Beige			•					•							•				
3380	Atena Rosa			•					•							•				
3382	Dades				•					•							•			
3383	Manaus Brown				•					•							•			
3381	Manaus Gray				•					•							•			
3349	Stromboli				•					•							•			
3362	Ortles Bianco			•						•						•				
3194	Corlam Bianco			•						•						•				
3195	Corlam Beige			•						•						•				
3237	Soft Stone Bianco			•						•						•				
3354	Caribe Bianco									•							•			
3363	Caribe Grigio									•							•			
3409	Munè Brown													•						•
3410	Munè Grey													•						•
3408	Munè Black													•						•
3431	Grey Cardoso													•						•
3432	Black Cardoso													•						•
3420	Calypso													•						•

## Typologies

All range is available in Standard (STD), Postforming (PF)

## Thickness (mm)

All range is available in  
0,7mm - 0,9mm (STD)  
0,6mm (PF)

# Pietre

## Stones

Code	Decor Name	Sizes (mm) & Finishes														
		3050x1300					4200x1300					4200x1600				
		Kér	Mika	Luna	Urban	Kér	Mika	Luna	Urban	Losa	Kér	Mika	Luna	Urban	Losa	
3440	Paraiba Brown									•					•	
3441	Paraiba White									•					•	
3442	Paraiba Grey									•					•	
3330	Corten Sabbia			•				•				•				
3331	Corten Grigio			•				•				•				
3428	Oxun			•				•				•				
3355	Luserna Bianco				•				•					•		
3366	Luserna Nero				•				•					•		
3364	Luserna Grigio				•				•					•		
3255	Ardesia				•				•					•		
3416	Drop		•					•				•				
3430	Dark Tribeca		•					•				•				
3329	Porfido Nero		•					•				•				
3358	Porfido Principe							•				•				
3325	Porfido Marrone		•					•				•				
3326	Porfido Grigio		•					•				•				
3324	Porfido Naturale		•					•				•				
3327	Porfido Chiaro		•					•				•				
3328	Porfido Gesso		•					•				•				
3342	Basalto Cenere							•				•				
3341	Basalto Marrone							•				•				
3340	Basalto Vulcano							•				•				
3192	Copperfield Grigio			•				•				•				
3375	Travertino Romano			•				•				•				
3433	Marquinia			•				•				•				
3369	Cassaforma			•				•				•				
3415	Cuma Dark			•				•				•				
3414	Cuma Light			•				•				•				
3359	Portland Grigio							•				•				
3347	Portland Bianco			•				•				•				
3453	Marmo Afyon	•						•				•				
3346	Marmo Canova	•						•				•				
3281	Gioia Bianco	•						•				•				

## Typologies

All range is available in Standard (STD), Postforming (PF)

## Thickness (mm)

All range is available in  
0,7mm - 0,9mm (STD)  
0,6mm (PF)



**Fantasia**  
Patterns

Code	Decor Name	Sizes (mm) & Finishes																								
		3050x1300								4200x1300								4200x1600								
		Tex	Lucida	Ghibli	Urban	Kér	Mika	Flatting		Tex	Lucida	Ghibli	Urban	Kér	Mika	Flatting		Tex	Lucida	Ghibli	Urban	Kér	Mika	Flatting		
3468	Samui	NEW																								
3472	Peltro	NEW																								
3473	Rapsodia	NEW																								
3474	Riff	NEW																								
3411	Voyage Copper																									
3412	Voyage Bronze																									
3413	Voyage Silver																									
3279	Volcanic Ash																									
3396	Cimant Sand																									
3397	Cimant Grey																									
3395	Cimant White																									
3398	Cimant Ash																									
3418	Cryptic Brown																									
3419	Cryptic Grey																									
3417	Cryptic White																									
2619	Sixty Crema																									
2618	Sixty Verde																									
3317	Sixty Nero																									
2620	Sixty Bianco																									
3318	Sixty Grigio																									
2536	Rosa Versailles																									
2516	Madreperla																									
2608	Argento																									

## Typologies

All range is available in Standard (STD), Postforming (PF)

## Thickness (mm)

All range is available in  
0,7mm - 0,9mm (STD)  
0,6mm (PF)

# Fantasia

## Patterns

Code	Decor Name	Sizes (mm) & Finishes																							
		3050x1300								4200x1300								4200x1600							
		Tex	Lucida	Ghibli	Urban	Kér	Mika	Flatting	Tex	Lucida	Ghibli	Urban	Kér	Mika	Flatting	Tex	Lucida	Ghibli	Urban	Kér	Mika	Flatting			
3175	Gold		•																						
2513	Pleiadi		•																						
2633	Brown Shot		•						•																
2624	Adil		•																						
2631	Green Shot		•						•																
2632	Blue Shot		•						•																
2625	Vega		•																						
2623	Nial		•																						
2617	Micro Nero		•																						
2621	Micro Pruno		•																						
2551	Visone			•																					
3443	Swing Grey					•								•									•		
3444	Swing Cream					•								•									•		
3112	Ecodecor Magnolia														•									•	
3427	Silver Seventy																								•
3426	Gold Seventy																								•
3392	Hipster Bronze																								•
3393	Hipster Copper																								•
3394	Hipster Carbon																								•

## Typologies

All range is available in Standard (STD), Postforming (PF)

## Thickness (mm)

All range is available in  
0,7mm - 0,9mm (STD)  
0,6mm (PF)

HPL Properties

The most important characteristics of decorative High Pressure Laminates are:

- Impact resistant
- Scratch and wear resistant
- Light fastness
- Easy to clean
- Heat resistant
- Hygienic
- Suitable for contact with food

Composition

- 70% Paper
- 30% Thermosetting Resins

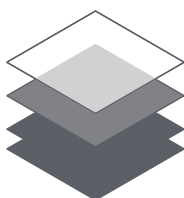
Thin

Single Sided

Overlay\*

Decorative Paper

Kraft paper



Disclaimer

These terms govern your use of any and all information made available to you in any form whatsoever by Arpa Industriale S.p.A. and its group companies (hereinafter: "Arpa" and the information, the "Information"). The Information is solely indicative and exclusively intended for general informational purposes. No rights can be derived from the information provided; the use of the Information is at your risk and responsibility. This document does not guarantee any properties of Arpa's products. Arpa does not warrant that the Information in any document is suitable for the purpose for which you consult it. Arpa does not warrant the accuracy and/or completeness of the Information. Any recommendation in the Information serves as a general guide to good practice only. The Information constitutes no form of warranty or representation as to fitness for purpose in respect of the products and processes described in it. Any information or products contained within this document must be verified and tested for suitability by the user for his or hers particular purpose or specific application. Consideration needs to be given to local or specific circumstances. The content of these documents reflect our knowledge and experience at the time of publication. The Information is not intended as any recommendation, any design, structural

calculation, estimate or other warranty or representation that you may rely on. You must have a professional adviser inform you about (the suitability of) the Arpa products for all desired applications and about compliance with design requirements, applicable codes, laws and regulations, and test standards. Arpa will not accept any liability in relation to your use. Colors used in Arpa's communications (including but not limited to printed matter) and in samples of Arpa's products may differ from the colors of the Arpa products to be supplied. Samples are not intended for use in product tests and are not representative of all characteristics of the Arpa products. Such products and samples are produced within the specified color tolerances and the colors (of production batches) may differ, even if the same color is used. The viewing angle also influences the color perception. All oral and written statements, offers, quotations, sales, supplies, deliveries and/or agreements and all related work of Arpa are governed by the Arpa General Terms and Conditions of Sale. Any use, claim or dispute related to the Information, including disputes regarding the existence and validity of these terms, shall be governed and construed exclusively in accordance with the law and exclusive jurisdiction of Italy (Cuneo).

To know more about the products and to access technical information and certifications please contact your Arpa sales representative and/or visit [arpaindustriale.com](http://arpaindustriale.com)

Arpa Industriale S.p.A.  
Via Piumati, 91  
12042 Bra (CN) – Italy  
Tel. +39 0172 436111  
arpa@arpaindustriale.com  
export@arpaindustriale.com  
arpaindustriale.com



follow us

